

FOR LEASE

RENAISSANCE TOWER

9505 - 105 AVENUE

Edmonton, AB



Photos herein are the property of their respective owners and use of these images without the express written consent of the owner is prohibited.



PROPERTY OVERVIEW

- + New Building
- + Abundant natural light
- + Main floor direct access
- + Excellent signage and visibility
- + Available immediately



CONTACT ME

JEFF SIMKIN

Senior Vice President

+1 780 917 4633

jeff.simkin@cbre.com

www.cbre.ca/edmonton

CBRE

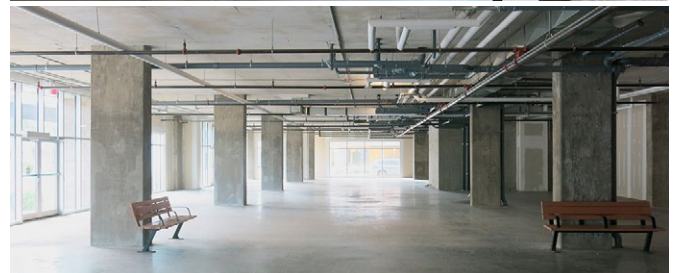
FOR LEASE RENAISSANCE TOWER

9505 - 105 AVE
Edmonton, AB

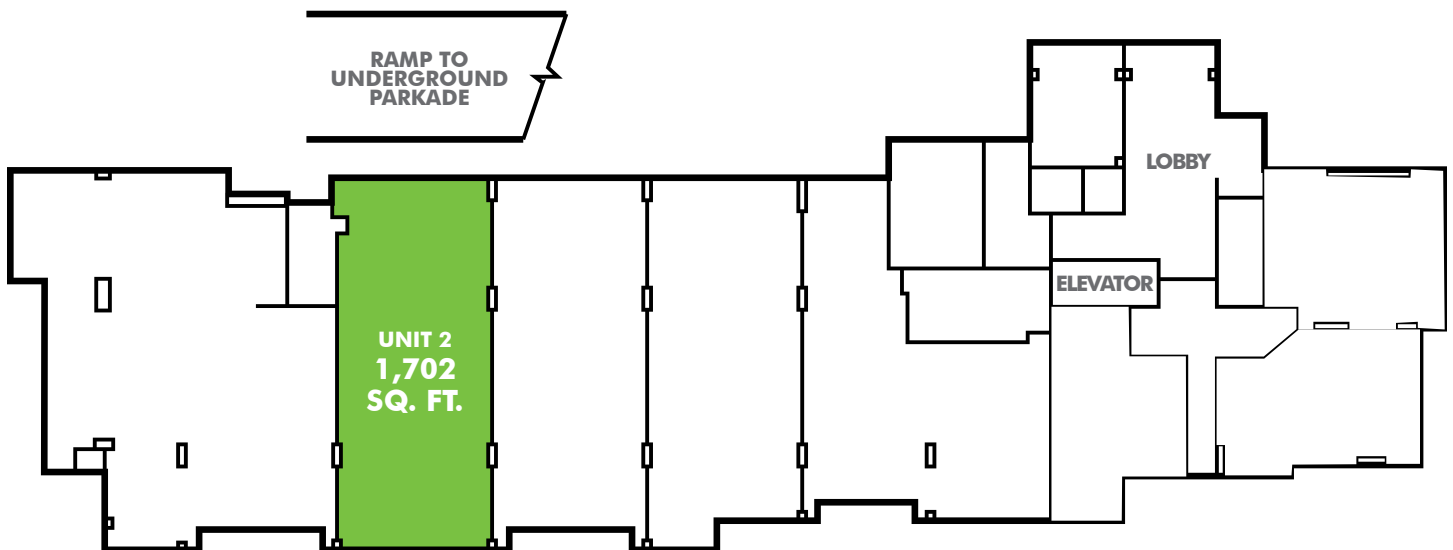


PROPERTY DETAILS

Area	Unit 2: 1,702 sq. ft.
Rent	Negotiable
Operating Costs	\$10.00 per sq. ft. (+ utilities and janitorial)
Parking	1 underground stall per 1,000 sq. ft. at \$150 per month
Available	Immediately



SITE PLAN



This disclaimer shall apply to CBRE Limited, Real Estate Brokerage, and to all other divisions of the Corporation; to include all employees and independent contractors ("CBRE"). The information set out herein, including, without limitation, any projections, images, opinions, assumptions and estimates obtained from third parties (the "Information") has not been verified by CBRE, and CBRE does not represent, warrant or guarantee the accuracy, correctness and completeness of the Information. CBRE does not accept or assume any responsibility or liability, direct or consequential, for the Information or the recipient's reliance upon the Information. The recipient of the Information should take such steps as the recipient may deem necessary to verify the Information prior to placing any reliance upon the Information. The Information may change and any property described in the Information may be withdrawn from the market at any time without notice or obligation to the recipient from CBRE. CBRE and the CBRE logo are the service marks of CBRE Limited and/or its affiliated or related companies in other countries. All other marks displayed on this document are the property of their respective owners. All Rights Reserved.

www.cbre.ca/edmonton

CBRE