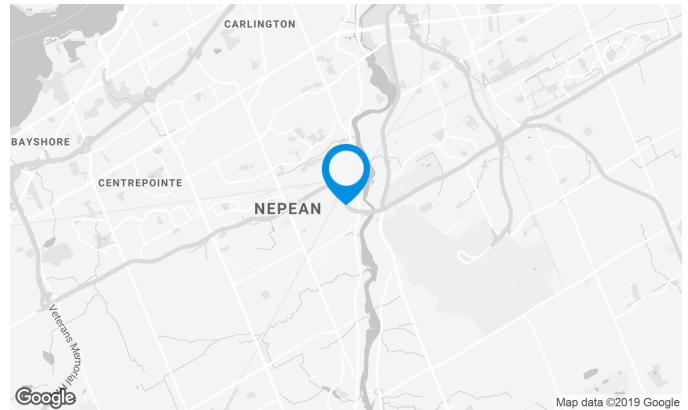


Building characteristics

TOTAL LEASING AREA	71,610 ft ²
NUMBER OF FLOORS	5
ELEVATORS	2
SPRINKLERS	Yes
HVAC HOURS	Building accessible to tenants 24/7 with access card; otherwise open 7:00 a.m. to 6:00 p.m.
SECURITY	A security system card swipe control access to the building. Intercom system in place. Security cameras.

BUILDING ACCESSIBILITY

OUTDOOR PARKING	263
-----------------	-----



Justin Levine

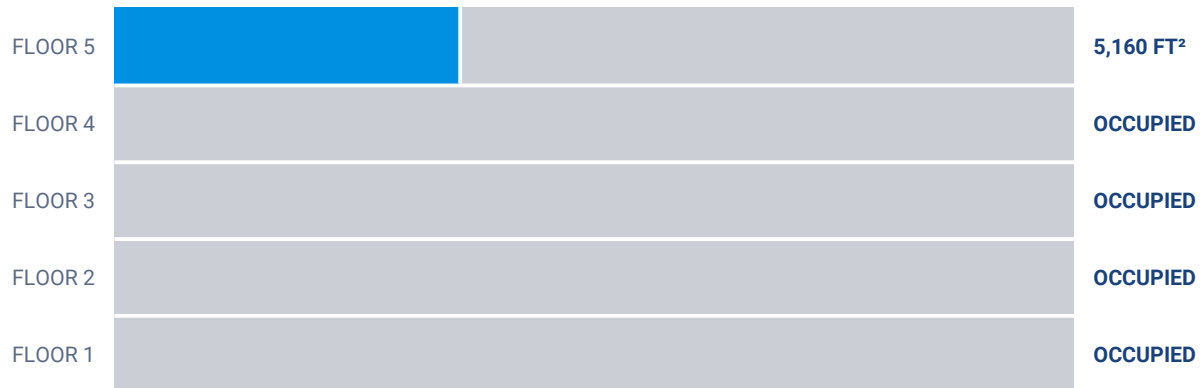
LEASING MANAGER
LEASING - OFFICES, ONTARIO AREA

T 613 234-4416 #8428

C 613 323-1377

E JUSTIN.LEVINE@COMINAR.COM

Superficie locative disponible de 5,160 ft²

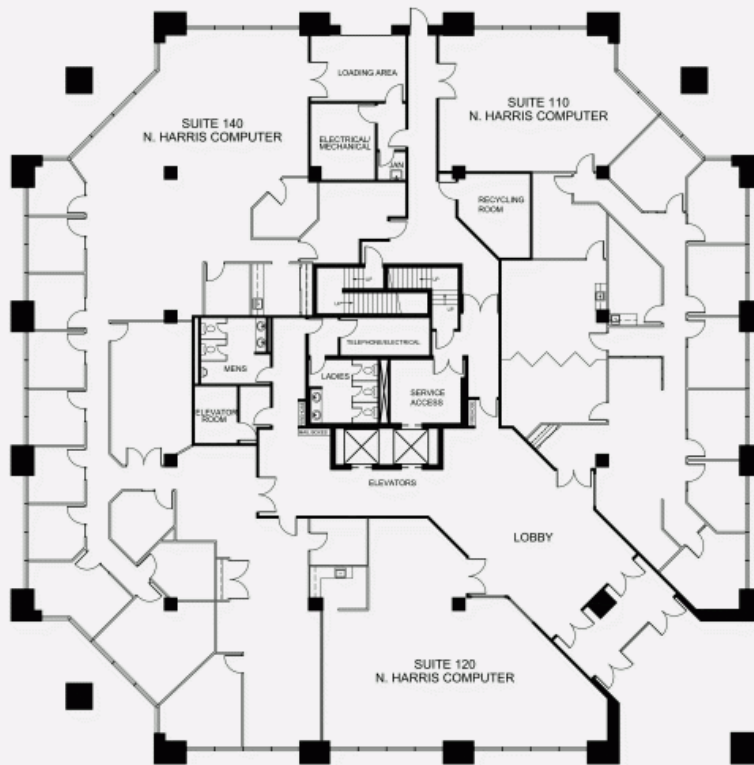


List of available offices

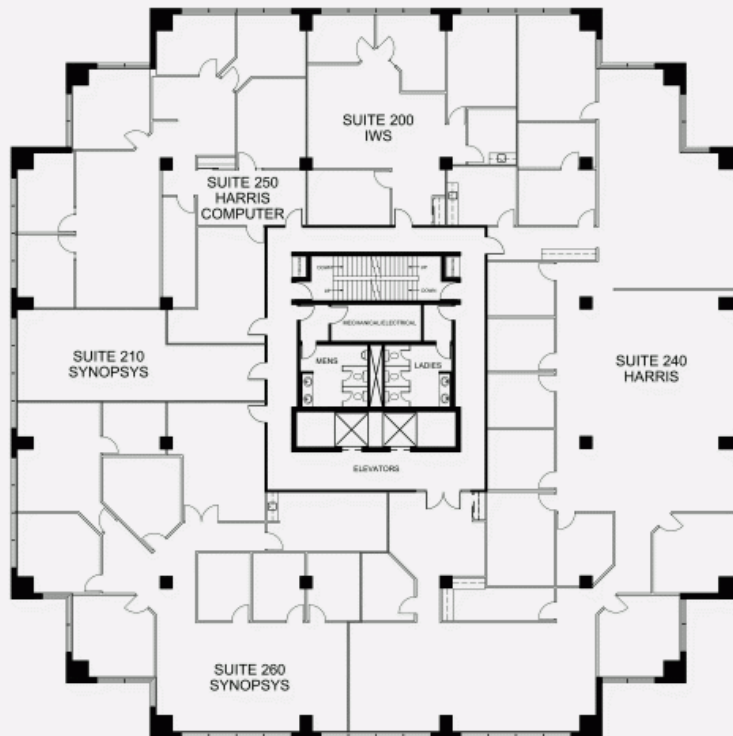
SUITE	FLOOR	AVAILABILITY	AREA
Suite #530	5	June 2019	5,160 ft ²



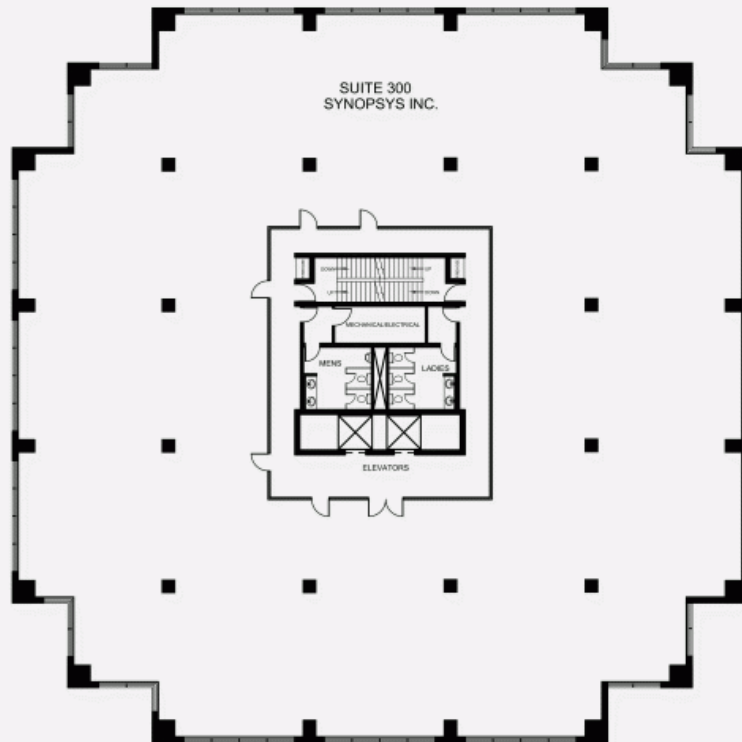
FLOOR 1 PLAN



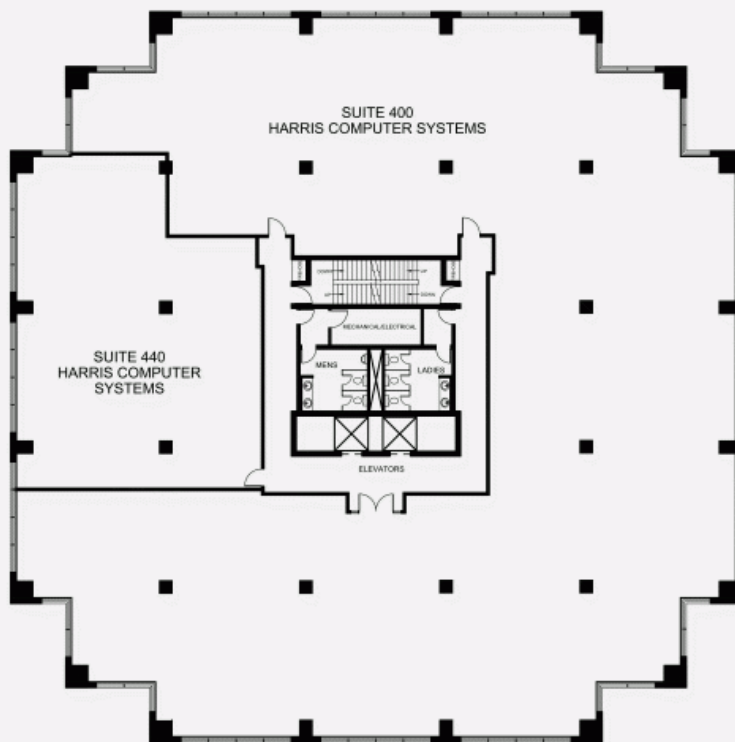
FLOOR 2 PLAN



FLOOR 3 PLAN



FLOOR 4 PLAN



FLOOR 5 PLAN

